

HS Reel Cart - Transport Rolls in the Production Area

Unique Easy to Use Light Weight Design with Low Investment

- Avoids risky unloading processes from the pallet
- Rolls always kept under control
- Light weight cart - only 14kgs!
- Lower investment than traditional steel carts
- 2 braked wheels for safe and secure parking of rolls
- No Handle Needed - when it's loaded push the roll
 - When it's empty carry the cart, - it's light

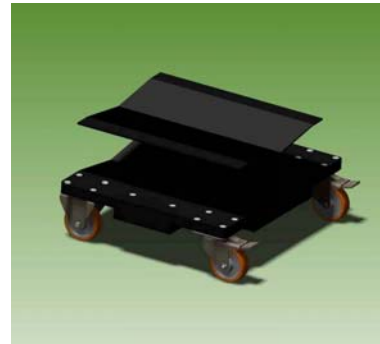


See the You Tube video of this Roll Cart at:-

<http://www.youtube.com/watch?v=FcotrI5OzBo&list=FLr4rdSvUNrrGxKPX81hrdNQ&index=1>



Courtesy of www.leachprint.co.uk



- Flexible and strong construction to cater for arduous use
- Easy to Move & wheels have tyres to absorb uneven floors
- 5 wheels not 4 ensure even weight distribution and ease of movement
- Small footprint & Integrated Carry handle
- Raised tray option to raise roll to suit operational needs—see above
- Save paper - No removal of first few millimetres of paper when loading

Recommended manual lift guidelines are a maximum of 25kgs for men & 16kgs for women

Specification

Material: Polypropylene . Weight: 14kgs. Roll sizes up to 1320mm (52 inch) diameter.

Dimensions: Width 490mm x Length 600mm x Height 145mm. Wheel size diameter 80mm. Load Capacity 750kgs

Other size and weight specifications are available on request